

Technical Manual



www.emme-italia.com

Via del Molino, 40 - 52010 Corsalone (AR) - Italy - info@emme-italia.com - Tel. +39.0575.511320
Other branches in Italy : Milano - Padova - Roma - Palermo - Cagliari - P.IVA/ C.F. 11208251006 - R.E.A. AR-159122

17504 - Lazio 18284 : Wheeled Fire Extinguisher, 50 Kg Carbon Dioxide



Note: image is for illustrative purpose only, the product purchased can has some difference

- **CYLINDER**
Alloy steel, external powder painting, color Red Ral 3000.
- **EXTINGUISHING AGENT**
Carbon Dioxide 99,99 % (CO₂) .
- **VALVE**
W 28.8, brass body, handwheel red painting, with protection for valve.
- **USE**
Fire Rating class B (flammable liquids).
- **BRACKET**
Frame on wheels, red painting Ral 3000.

REPRODUCTION IS PROHIBITED

50 Kg Carbon Dioxide Fire Extinguisher, temperature range from -30°C to +60°C, manufactured in accordance to **UNI EN 1866-1 (D.M. 6.3.92)**, certified according to the directive for pressure equipment PED 2014/68/EU.

Quality Product certification guaranteed by Bureau Veritas Italia.

Suitable for use on fire involving electrical voltages up to 1'000 V, at a minimum distance of 1 meter.

APPROVED/CERTIFIED FIRE EXTINGUISHER:



PED 2014/68/EU

BUREAU VERITAS

For certified MED 2014/90/EU
version : cod. 14504



**FIRE
RATING :**



233

File name	Type of document	Fire Extinguisher Model	Date	Rele.	Check	Rev.	Pag.
17504_Technical manual	Technical manual	17504 Lazio 18284	29/07/2024	M.R		2	1/3

17504 – Lazio 18284 : Wheeled Fire Extinguisher, 50 Kg Carbon Dioxide

• INSTALLATION

The installation and the control and/or recovery operations of fire extinguisher must be performed by qualified technician and in accordance to current regulations on the matter.

• USE

• MAINTENANCE

The technician will carry out annual inspection for check the charge and after all other steps planned during the fire extinguisher useful life

Any tampering or operation performed by unqualified technician, void the product warranty.

If possible, is recommended to place fire extinguisher in a dry place, protected from atmospheric agents.

For installation, use and maintenance follow as indicated in file : ECC_1_ENG

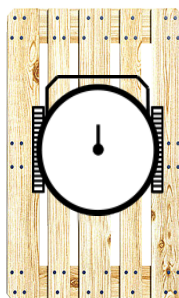
TECHNICAL SPECIFICATIONS

FIRE RATING	233 B
EXTINGUISHING AGENT	Carbon Dioxide 99,99 % (CO ₂)
TEMPERATURE RANGE	-30°C / +60°C
NOMINAL CHARGE	50 Kg
FULL WEIGHT	~ 145 Kg
FRAME WEIGHT	~ 17,10 Kg (with wheels)
DIMENSIONS	Height 1270 +/- 10 mm Width 580 +/- 10 mm Depth (max size) 1425 +/- 10 mm
DISCHARGE TIME	~ 48,9 seconds
CYLINDER PRESSURE TEST	PT 300 bar
CYLINDER VOLUME	68 L + 5%
SAFETY DEVICE	Set between 230 and 245 bar
CYLINDER MATERIAL	Steel alloy
TREATMENT	Outside: Sandblast and powder painting, Ral 3000

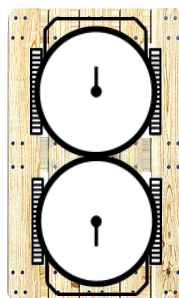
PACKAGING

(Note: quantities and measurements are indicative and can be subject at changes)

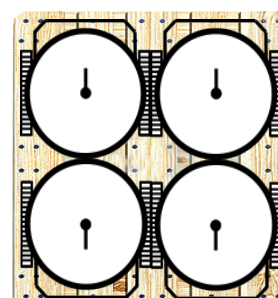
Nr. 1 pieces on pallet
80x180x135(h) cm



Nr. 2 pieces on pallet
100x120x190(h) cm



Nr. 4 pieces on pallet
165x170x190(h) cm

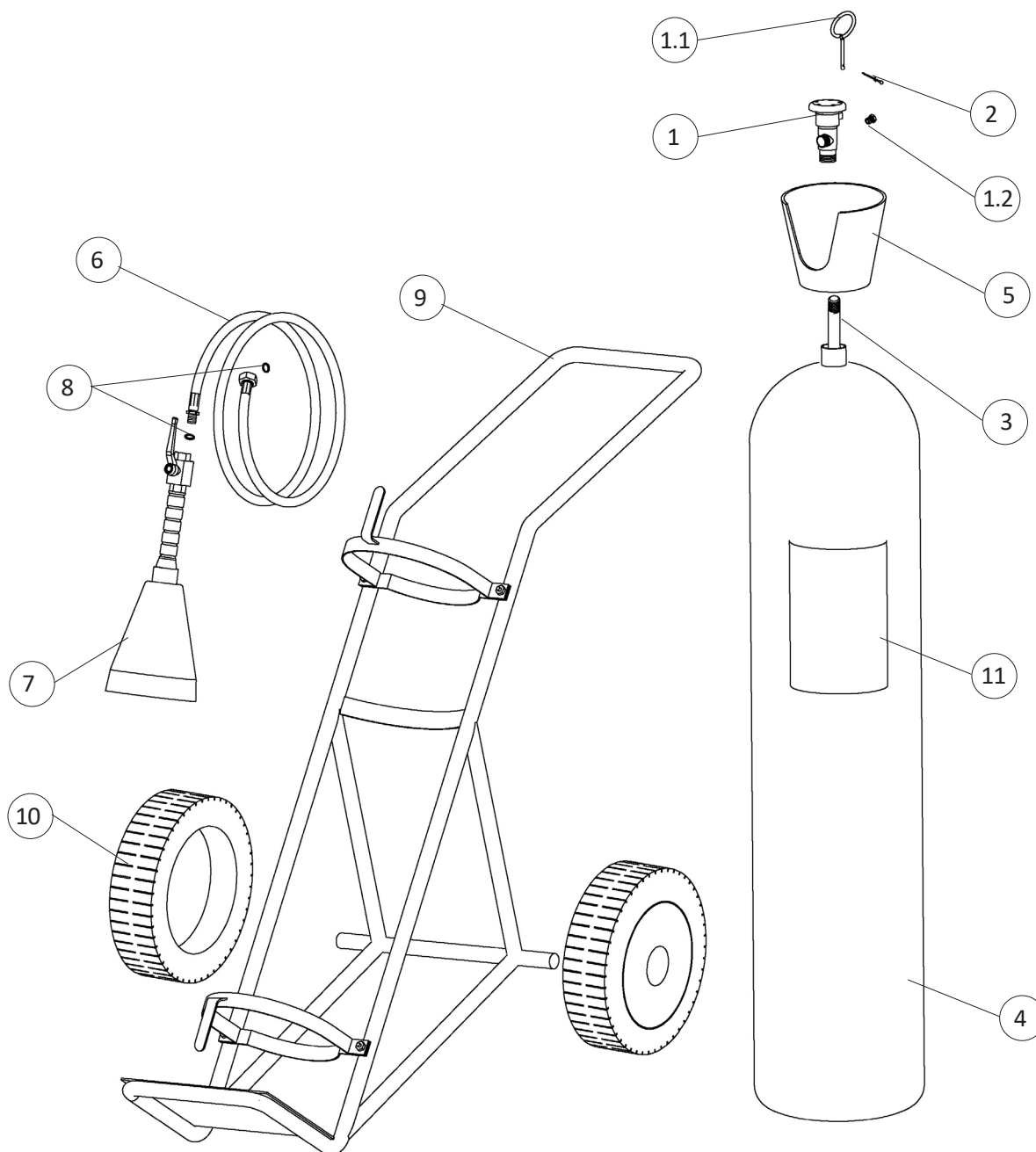


TRANSPORT DISPOSAL

Land transport : Exemption for the purposes of ADR disposal 594
Ship Transport : IMDG Code – UN 1044 class 2.2 Fire Extinguishers

File name	Type of document	Fire Extinguisher Model	Date	Rele.	Check	Rev.	Pag.
17504_Technical manual	Technical manual	17504 Lazio 18284	29/07/2024	M.R		2	2/3

COMPONENTS AND SPARE PARTS LIST



NUM.	DESCRIPTION	CODE
1	Handwheel valve W 28.8	11531
1.1	Safety pin	0282-1
1.2	Safety device	n.a.
2	Safety pin seal	0285
3	Dip tube aluminum alloy	18412-1
4	Cylinder	18333
5	Protective cap for valve	0096
6	Hose	18425

NUM.	DESCRIPTION	CODE
7	Dispensing nozzle (complete of ball valve with control lever)	0336
8	Nylon gasket	0204
9	Frame	18487
10	Wheel + stopwheel (diam. 400mm)	0125
	Thick washer	2148-10
11	Label 17504	18387
	Label 14504	18387M

The spare part at number 1 includes already others components 1.1 and 1.2

"n.a." mean that the component is not available as single spare part

File name	Type of document	Fire Extinguisher Model	Date	Rele.	Check	Rev.	Pag.
17504_Technical manual	Technical manual	17504 Lazio 18284	29/07/2024	M.R		2	3/3