

Use and Maintenance Technical Manual



Scan QR Code
and visit the
website to see
more details
about our
products



Emme Antincendio S.r.l.
www.emme-italia.com

Via del Molino, 40 - 52010 Corsalone (AR) - Italy - info@emme-italia.com - Tel. +39.0575.511320
Other branches Emme Antincendio s.r.l. in Italy : Milano - Padova - Roma - P.IVA/ C.F. 11208251006 - R.E.A. FI-632545

17504 - LAZIO 18284 : Wheeled Fire Extinguisher, 50 Kg Carbon Dioxide



Note: image is for illustrative purpose only, the product purchased can has some difference

- **CYLINDER**
Alloy steel, external powder coating, color Red Ral 3000.
- **EXTINGUISHING AGENT**
Carbon Dioxide 99,99 % (CO₂).
- **VALVE**
W 28.8, brass body, handwheel red painting, with protection for valve.
- **USE**
B fire rating (flammable liquids).
- **BRACKET**
Chassis on wheels, red painting Ral 3000.

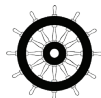
© REPRODUCTION IS PROHIBITED

50 Kg carbon dioxide wheeled fire extinguisher, temperature range from -30°C to +60°C, manufactured in accordance to **UNI EN 1866-1 (D.M. 6.3.92)**, certified according to the directive for pressure equipment PED 2014/68/EU. Quality Product certification guaranteed by Bureau Veritas Italia. Suitable for use on fire involving electrical voltages up to 1'000 V, at a minimum distance of 1 mt.

APPROVED/CERTIFIED FIRE EXTINGUISHER:



For certified MED 2014/90/EU version:
cod. 14504



**FIRE
RATING :**



233

File name	Type of document	Fire Extinguisher Model	Date	Rele.	Check	Rev.	Pag.
17504_ technical manual	Use and Maintenance technical manual	17504	06/03/2023	M.R		1	1/7

17504 - LAZIO 18284 : Wheeled Fire Extinguisher, 50 Kg Carbon Dioxide

TECHNICAL SPECIFICATIONS

FIRE RATING	233 B
EXTINGUISHING AGENT	Carbon Dioxide 99,99 % (CO ₂)
TEMPERATURE RANGE	-30°C / +60°C
NOMINAL CHARGE	50 Kg
FULL WEIGHT	~ 145 Kg
DIMENSIONS	Height 1270 +/-5 mm ; Width 1425 +/-5 mm Depth 580 +/-5 mm
DISCHARGE TIME	~ 48,9 seconds
VALVE TIGHTENING TORQUE	Minimum 200 Nm, Maximum 300 Nm
CYLINDER PRESSURE TEST	PT 300 bar
CYLINDER VOLUME	68 L.
SAFETY DEVICE	Set between 230 and 245 bar
CYLINDER MATERIAL	Alloy steel
EXTERNAL TREATMENT	Sandblast and powder painting, Red Ral 3000 colour

PACKAGING

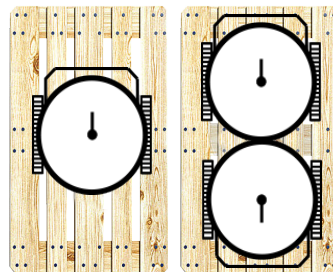
(Note: the packaging quantities and measurements are indicative and can be subject at changes)

nr. 1 piece for pallet

Pallet dimensions 80x180x135(h) cm

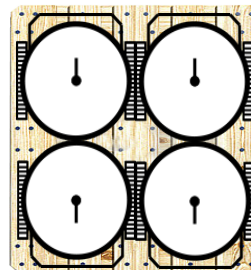
nr. 2 pieces for pallet

Pallet dimensions 100x120x190(h) cm



Maximum nr. 4 pieces for pallet

Pallet dimensions 165x170x190(h) cm



TRANSPORT DISPOSAL

Land transport : Exemption for the purposes of ADR disposal 594

Ship Transport : IMDG Code - UN 1044 class 2.2 Fire Extinguishers

File name	Type of document	Fire Extinguisher Model	Date	Rele.	Check	Rev.	Pag.
17504_technical manual	Use and Maintenance technical manual	17504	06/03/2023	M.R		1	2/7

COMPONENTS AND SPARE PARTS LIST

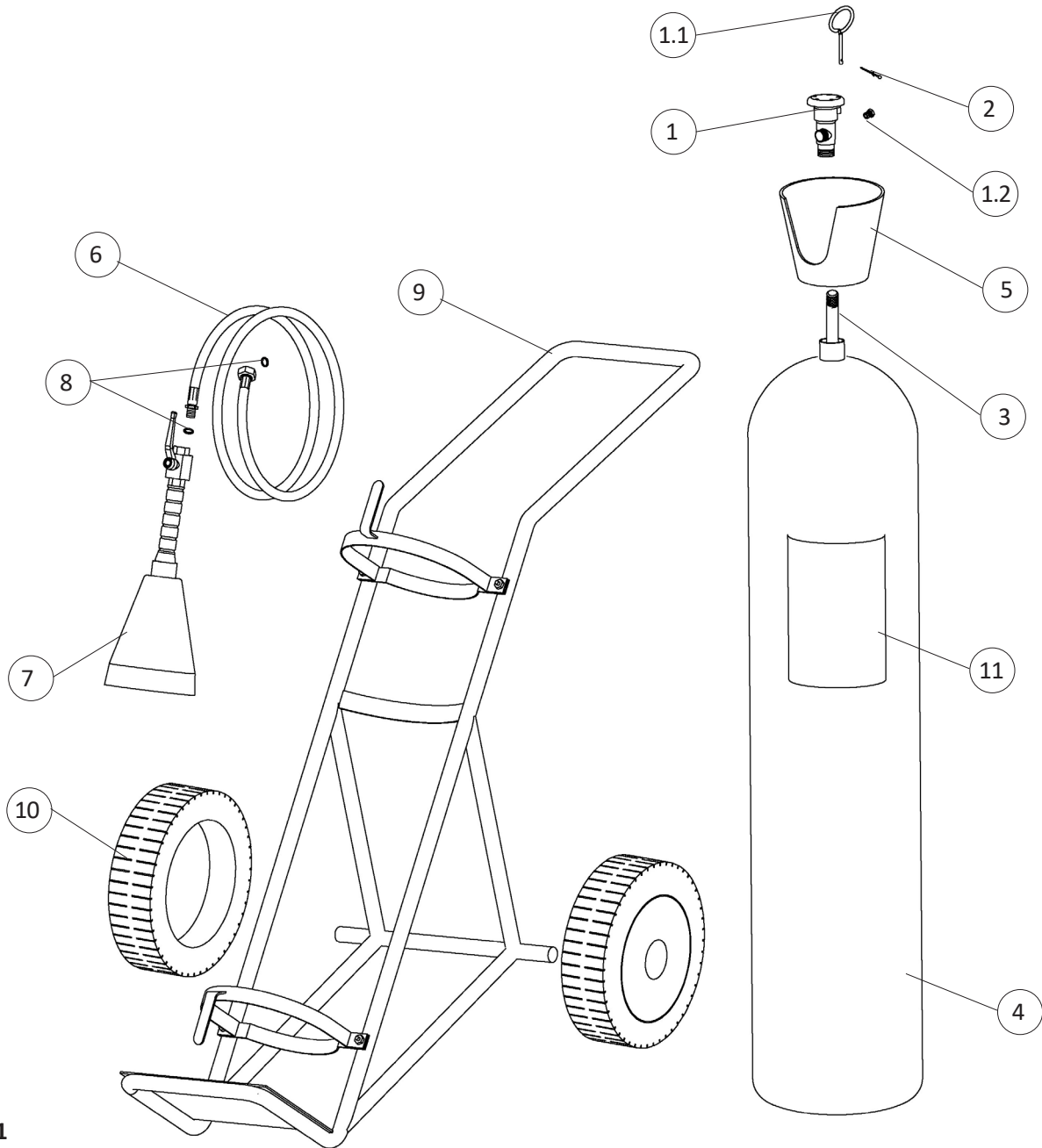


Table 1

NUM.	DESCRIPTION	CODE
1	Handwheel valve W 28.8	11531
1.1	Safety pin	0284
1.2	Safety device	n.a.
2	Safety seal for safety pin (green)	0285
3	Aluminum dip tube	18412-1
4	Cylinder	18333
5	Protection cap for valve	0096
6	Hose	18425

NUM.	DESCRIPTION	CODE
7	Dispensing nozzle (complete of ball valve with control lever)	0336
8	Nylon gasket	0204
9	Chassis	18487
10	Wheel + wheel stop (diam. 400mm)	0125
	Thickness washer	2148-10
11	Label 17504	18387
	Label 14504	18387M

The spare part at number 1 includes already all others components indicated from 1.1 to 1.2
 "n.a." mean that the component is not available as single spare part

File name	Type of document	Fire Extinguisher Model	Date	Rele.	Check	Rev.	Pag.
17504_ technical manual	Use and Maintenance technical manual	17504	06/03/2023	M.R		0	3/7

Maintenance periods for efficiency guarantee, methods and subjects accredited for maintenance

1) GENERAL REQUIREMENTS

All Fire Fighting Fire Extinguishers produced by Emme Antincendio must be installed, inspected and maintained in accordance with the following manual and with the rules in force in the country of destination.

All fire extinguishers must be recharged after partial use with original spare parts.

Every ordinary / extraordinary maintenance operation must be carried out using original spare parts and compliant with the declared certified prototype. The described below maintenance operations must be carried out by recognized personnel qualified by the company Emme Antincendio.

Fire extinguishers are classified into two categories that provide for specific construction standards:

- portable fire extinguishers: fire extinguishers designed to be transported and operated by hand, with a mass not exceeding 20 kg under operating conditions. Reference standard: EN 3-7
- wheeled fire extinguishers: wheel fire extinguishers designed to be transported and operated by hand, with a mass greater than 20 kg. Reference standards: EN 1866-1

Moreover, in relation to the extinguishing agent contained in them, they are identified in:

- water based fire extinguishers including foam extinguishers;
- powder fire extinguishers;
- carbon dioxide fire extinguishers;
- clean agent extinguishers

2) REFERENCE RULES

Fire Extinguishers produced by Emme Antincendio are manufactured in compliance with the following rules:

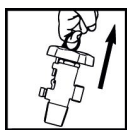
- EN 3-7: 2008 Portable fire extinguishers;
- EN 1866-1: 2008 Wheeled fire extinguishers;
- PED Directive 2014/68/EU pressure equipment;
- MED Directive 2014/90/EU devices for marine use (only for products bearing the relative MED certification mark, see pag 1 of this document)

3) INSTALLATION

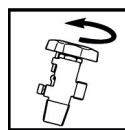
- 1) Position the fire extinguisher in spacious areas, without obstacles.
- 2) Do not expose the fire extinguisher to the atmospheric agent or chemical agent.
(In this case protect the fire extinguisher with suitable cover)
- 3) Do not expose the fire extinguisher to the direct sunlight.
- 4) Keep children away from fire extinguisher.
- 5) For Marine equipment or outdoor installation we recommend use of cover.

4) MODALITY AND PRECAUTIONS FOR THE USE

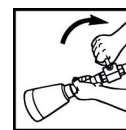
- 1) Follow the operating Instructions printed on the main fire extinguisher label :



- 1) UNROLL THE HOSE
- 2) REMOVE SAFETY PIN



- 3) OPEN THE VALVE



- 4) HOLD THE NOZZLE, MOVE THE LEVER AND AIM THE JET AT BASE OF FIRE

File name	Type of document	Fire Extinguisher Model	Date	Rel.	Check	Rev.	Pag.
17504_ technical manual	Use and Maintenance technical manual	17504	06/03/2023	M.R		0	4/7

17504 - LAZIO 18284 : Wheeled Fire Extinguisher, 50 Kg Carbon Dioxide

- 2) Do not through the fire extinguisher on to the fire.
- 3) This fire extinguisher is a pressurized vessel and must not be pierced, dented or subjected to external damage.
- 4) Do not direct the extinguishing agent at another person.

5) STEPS AND FREQUENCY RELATED TO MAINTENANCE OPERATIONS

(For stored pressure fire extinguishers)

Note: The user have to complies to the national or international rules, if they are more restrictive of the below table

Table 2

Ref.	Periodicity	Step	Operations
5.1	12 Months	Inspection	Check the nominal charge by weighing the extinguisher.
5.2	10 Years	Hydrotest tank	Check the state of conservation and carry out the hydraulic test of the tank with special machinery. Is recommended the replacement of dispensing valve. N.B. : This procedure must be carried out by specialised staff, in certified laboratories.
5.3	*20 Years		Is recommended the replacement of fire extinguisher

* If the extinguisher is installed in particularly unfavorable environments, the recommended time can be reduced.
(a reduction to 10 years is advisable)

N.B. : All the operations must be calculated from the date of placing on the market.
For the hydraulic test refer to the date stamped on the tank.

5.1) Inspection steps


1	Check the stability and the correct wheel handling Check the condition of the marking label, replace if necessary.
2	Remove the hose/horn and check the correct internal passage with compressed air.
3	Check the safety seal and the safety pin conditions.
4	Check the nominal charge by weighing the cylinder. Before this operation, remove the accessories from the extinguisher (hose, horn etc.). Then use as references: – the tare weight indicated on the marking on the body of the extinguisher - the weight indicated in the body of the dispensing valve. - the weight of chassis (with wheels)
5	Reinstall the accessories (horn, hose, etc...)
6	Record the inspection activity on the maintenance tag and on the fire protection register.

* Chassis weight (with wheels) : ~ 17,10 Kg

File name	Type of document	Fire Extinguisher Model	Date	Rele.	Check	Rev.	Pag.
17504_ technical manual	Use and Maintenance technical manual	17504	06/03/2023	M.R		0	5/7

17504 - LAZIO 18284 : Wheeled Fire Extinguisher, 50 Kg Carbon Dioxide

Executive details Inspection steps

<p>1 - Check the stability and the correct wheel handling, check general conditions. Check the marking label and replace it if damaged.</p>	<p>2 - Remove the horn/hose and check the correct internal passage with compressed air.</p>
<p>3 - Check safety pin and safety seal. Replace if necessary.</p>	<p>4 - Check the nominal charge by weighing the cylinder. Before this operation, remove the accessories from the extinguisher (hose, horn etc.). Then use as references: – the tare weight indicated on the marking on the body of the cylinder; - the weight indicated in the body of the dispensing valve. - the weight of chassis (with wheels)</p>
<p>5 - Reinstall the relative accessories (horn, hose, ecc...). In this step check the plastic seal placed in the bindings of horn\hose and and replace if necessary</p>	<p>6 - Record the activity on the maintenance tag and on the maintenance register</p> 

File name	Type of document	Fire Extinguisher Model	Date	Rele.	Check	Rev.	Pag.
17504_ technical manual	Use and Maintenance technical manual	17504	06/03/2023	M.R		0	6/7

5.2) Hydraulic test

At least every 10 years from the production date the fire extinguisher must be overhauled by a hydraulic pressure test in accordance with the pressure values "PT" stamped on the cylinder.

N.B.: This procedure must be carried out by specialised staff, in certified laboratories.

Is recommended the replacement of dispensing valve.

5.3) Twenty-year control

End-of-life fire extinguishers must be disposed in accordance with local waste management rules.

Before disposal or disassembly, the fire extinguisher MUST BE DEPRESSURIZED by a competent person.

Fire extinguishers should always be disposed of through an approved disposal company and in accordance with applicable local and national codes.

(see table 2 at point 5.3).

6) SPARE PARTS AND MAINTENANCE TOOLS

6.1) SPARE PARTS LIST

For the spare parts list see the table 1 at pag 3.

For more details see web site www.emme-italia.com

6.2) Inspection\Maintenance Tools

For a complete list of recommended tools see web site www.emme-italia.com.

It is recommended to use instruments with controlled calibration and periodically verified (at least every 12 months) with certified sample instrument.

File name	Type of document	Fire Extinguisher Model	Date	Rele.	Check	Rev.	Pag.
17504_ technical manual	Use and Maintenance technical manual	17504	06/03/2023	M.R		0	7/7